



List of materials

What you need to build your own

Author	Date	Comment
Mathieu Passenaud	04/10/2018	Initial version



1	Table des matières	
2	Computer.....	3
3	Relay	4



2 Computer

We have 2 modules fully compatible

Raspberry pi zero W : <https://www.raspberrypi.org/products/raspberry-pi-zero-w/>



- 1GHz, single-core CPU
- 512MB RAM

Raspberry pi 3 model B (or B+) : <https://www.raspberrypi.org/products/raspberry-pi-3-model-b/>



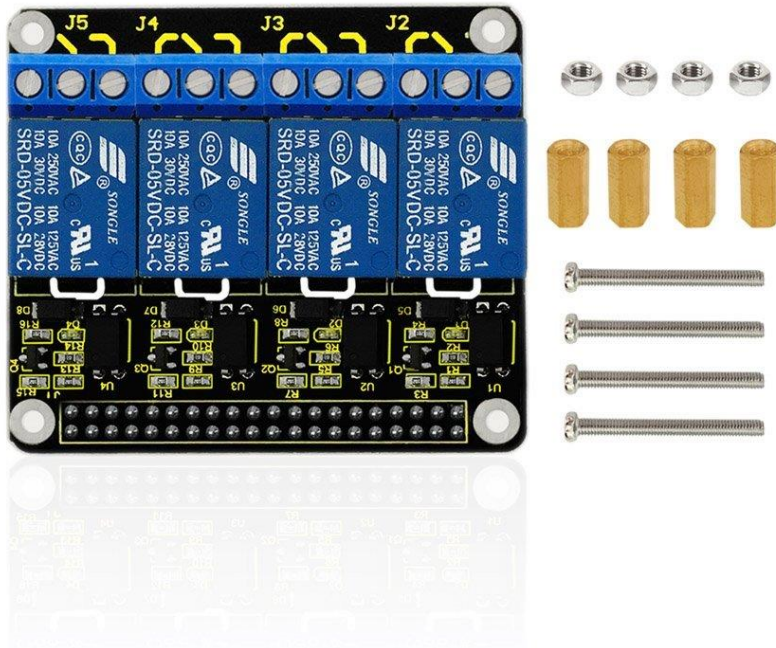
- Quad Core 1.2GHz Broadcom BCM2837 64bit CPU
- 1GB RAM

Others versions of raspberry pi can run please-open.it with an adapted Bluetooth USB adapter (there a list of compatible Bluetooth adapters : <https://www.wirelesshack.org/top-raspberry-pi-compatible-bluetooth-dongles.html>) but we do not give any support about.



3 Relay

Your recommendation is :



4 channels relay board from KEYESTUDIO. It has an optical isolation (opto-couplers) and it shape feets perfectly to a raspberry pi 3 or 3B with given screws.

Or

The same with only one relay on the board. It comes from XCSOURCE :

